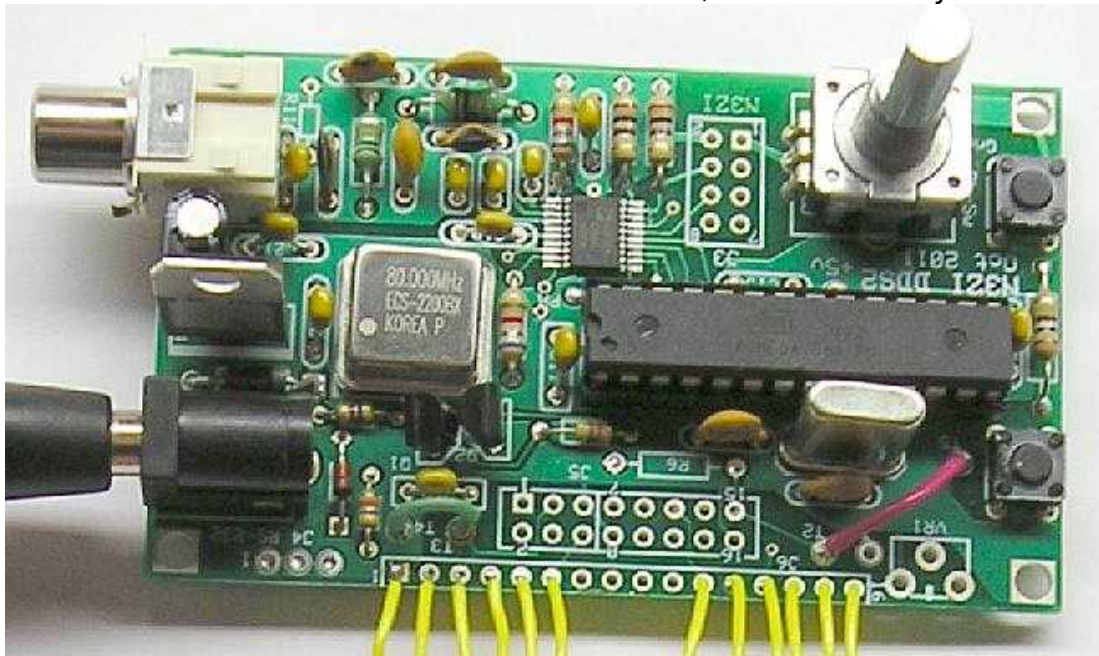


**Manual for the N3ZI DDS2**  
**WWW.PONGRANCE.COM**

Version 2.21 Mar 2012

For DDS2 kits with PCBs dated Oct 2011, with 20MHz Crystal



**Assembly**

Verify that you have all the correct parts for your kit by checking the parts against the packing list included with your kit. Many of the parts are static sensitive, and you should use industry standard techniques for proper handling of all parts. Be careful unpacking the DDS chip. It's a tad fragile, I usually pack it in with the PCB. It's in a small piece of antistatic rail tube or foam. It's best not to take it out of that until you are ready to solder it. The above photo should only be used as a general guide. Parts shipped with your kit may be of a different color or size, and not all the items shown in the photo are included in all kits.

Start by soldering in the power supply components. D1, U4, C19, C20, C21  
The PCB is laid out to accept a 2.1mm power connector, but it isn't really needed. This is a 2.1 mm coaxial power connector, +12v inside, ground outside. These connectors usually have 3 pins, there is no PCB hole for the side pin, just break it off. If you don't have a power connector, just solder your power wires directly into the PCB holes.

Double check the polarity on D1, C19, and the orientation of U2. Apply 12VDC power and check to see if 5VDC is present at U2 pin 7. If this is ok, solder down the DDS chip. It's the tiny 20 pin chip AD9834. It will be easier to solder it down if the rest of the board is nearly empty. The best method I have found for this chip is the use a 15~30 watt soldering iron, with a fine tip. Carefully align the chip in the right location. Make note of

the direction. Pin 1 goes in the lower right. Pin1 on the chip has a dot indent in the plastic package. I normally use scotch tape to temporarily hold the chip in place while I'm soldering it. Under no circumstances should you glue the chip to the PCB. Carefully align the chip to make sure it's centered, both left/right and up/down then hold the chip down with a piece of tape leaving one side of the chip exposed. Solder down one of the exposed corner pins. Remove the tape, re-align the chip, and solder the opposite corner. Then solder all the remaining pins, use plenty of solder and don't worry about solder bridging. After you are done use solder wick to remove excess solder and any solder bridges. (Flux will help the solder wick.) If the solder wick becomes frozen (soldered) to the board, don't rip it off, heat it up with your iron and pull it up carefully. Inspect it carefully by eye under a magnifying glass. Clean it with flux remover, and make sure there is no debris under the chip or elsewhere. Use a DVM or continuity tester all the connections are made by testing right as the lead exits the package, then on the PCB at the appropriate point. Also make sure there are no pin to pin shorts and no shorts to power or ground. Note than pins 4 and 5 will show as shorted because they are both connected to +5v. And pins 7, 10, 12, and 18 are hardwired to ground, so all should show continuity to ground. Pin to pin solder shorts are fairly common, frequently they appear OK visually, but show up sorted on the continuity check. Just lay some wick down apply heat, and you should wick up the excess solder causing the short. I that doesn't work, you can try running the blade of an exacto knife between the leads to clear out any short.

Next install the 3 capacitors next to the DDS chip, C1, C2, C3 be careful with these to avoid any solder shorts, and trim the leads neatly. Solder in the rest of the components. Kits normally include a socket for the micro. Solder in the remaining components.

A number of components can be installed on the front or the back of the PCB. Which you use will depend on how you plan on mounting the DDS. The Switches, the rotary encoder, the LCD connection, the RCA jack, all can be mounted on the back if you like. All function the same regardless of the side they are mounted on except the LCD connection (see below.) Note that you may have to cut the plastic nubs off of the RCA connector to get it to fit properly, or the pins can be bent such that the nubs hang off the end of the PCB.

The push-buttons are simple SPST switches, and you can remotely mount another switch in parallel if you like. You could use a single SPDT switch to replace both SPDT switches. One that is momentary with a center off position is a very slick setup. If you received the optical encoder in lieu of the PCB mounted encoder, please refer to the section below for connecting the optical encoder.

**Output filter:** This DDS uses a D/A converter to generate the sine wave output. This D/A converter is clocked at 80Mhz. The theoretical maximum output frequency is 40Mhz, this is refereed to the nyquist rate. All D/A converters have an image output above the nyquist frequency. (If you go to wikipedia, and search for nyquist you will find a nice article describing the theory) So if you generate a 39Mhz signal, which is 1 Mhz below the nyquist frequency, there will be a mirror image exactly 1 MHz above the nyquist rate, at 41Mhz. If you generate a signal at 25Mhz the mirror will be at 55Mhz. Normally an output filter is used to filter out this signal. The output filter included in your kit, will allow operation up to 34MHz, with about 40db of attenuation of the 46MHz mirror.

## Bill of Materials

(Note: The packing list included with your kit supersedes this list)

| <b>Designator</b>                     | <b>Part</b>        | <b>Qty</b> | <b>Description / Appearance</b> |
|---------------------------------------|--------------------|------------|---------------------------------|
| U2                                    | Micro ATMEGA168    | 1          | 28 Pin Dip                      |
| U2                                    | Socket             | 1          | 28Pin DIP socket                |
| U1                                    | DDS Chip AD9834    | 1          | Tiny 20 pin TSSOP               |
| PCB                                   | Circuit Board      | 1          | N3ZI DDS                        |
| XTAL                                  | 20 MHz XTAL        | 1          | Short Can 20.000                |
| U3                                    | Oscillator         | 1          | Metal can 80MHz                 |
| J5 LCD                                | LCD                | 1          | KTM-S1201                       |
| C1,C2,C3                              | 0.01uF Capacitor   | 3          | Yellow 103                      |
| C9, C10, C11, C12, C13, C14, C20, C21 | 0.10uF Capacitor   | 8          | Yellow 104                      |
| C5, C16, C17                          | 27pF Capacitor     | 3          | Brown 27                        |
| C19                                   | Electrolytic Cap   | 1          | Black Radial                    |
| C8                                    | 68pF Capacitor     | 1          | Brown/Orange 68                 |
| C6                                    | 47pF Capacitor     | 1          | Brown/Orange 47                 |
| C4                                    | 10pF Capacitor     | 1          | Orange 10                       |
| C7                                    | 4.7pF Capacitor    | 1          | Brown/Orange 4.7                |
| L1,L2                                 | 1.0uH Inductor     | 2          | Brown, Black, Gold              |
| U4                                    | Volt Reg           | 1          | 7805                            |
| D1                                    | Diode              | 1          | Black epoxy                     |
| D2                                    | Signal Diode       | 1          | Glass                           |
| Q1,Q2                                 | NPN Transistor     | 2          | To-92 2N2222                    |
| R1                                    | 6.8K Resistor      | 2          | Blue, Grey, Red                 |
| R4,R5                                 | 47K Resistor       | 2          | Yellow, Purple, Orange          |
| R3                                    | 4.7K Resistor      | 1          | Yellow, Purple, Red             |
| R8, R9                                | 200 Ohm            | 2          | Red, Black Brown                |
| R10*                                  | 4.7K to 10K        | 1          | Varies                          |
| R-ENC                                 | Encoder            | 1          |                                 |
|                                       |                    |            |                                 |
| SW1,SW2                               | Push button Switch | 2          |                                 |
| J1                                    | RCA Jack           | 1          |                                 |
|                                       |                    |            |                                 |
| R2*                                   | 200 Ohm            | opt        | Red, Black Brown                |
| R6*                                   | 10K Resistor       | opt        | Brown, Black, Orange            |
| VR1*                                  | 10K                | opt        |                                 |
| C15, R11                              | Not used           | 0          |                                 |

\* Usage of R2, R6, and VR1 depend on the LCD type supplied with your kit. R10 value is not critical, refer to your packing list for the value supplied with your kit.

Note: the appearance color and value of some parts change from time to time with differences from various suppliers. You should receive a packing list with your kit, which should have a current description for the parts in your kit, and it supersedes this list.

## LCD Configuration Options

| Component        | 10 Pin Serial LCD | 10 Pin serial LCD with variable contrast. | <del>14/16 Pin LCD with Fixed Contrast</del> | 14/16 Pin LCD with Adjustable Contrast |
|------------------|-------------------|---|--|--|
| R2               | Not Used          | Jumper                                    | <del>200 Ohms</del>                          | Jumper                                 |
| R6               | 10K               | Not Used                                  | <del>Not Used</del>                          | Not Used                               |
| VR1              | Not Used          | 10K pot                                   | <del>Not Used</del>                          | 10K pot                                |
| T1               | Not Used          | Jumper to T2                              | <del>Not Used</del>                          | Jumper to T3                           |
| T2               | Not Used          | Jumper to T1                              | <del>Jumper to T5</del>                      | 200 ohm Resistor to T5                 |
| T3               | Not Used          | Not Used                                  | <del>Jumper to T4</del>                      | Jumper to T1                           |
| T4               | Not Used          | Not Used                                  | <del>Jumper to T3</del>                      | Not Used                               |
| T5               | Not Used          | Not Used                                  | <del>Jumper to T2</del>                      | 200 ohm Resistor to T2                 |
| LCD Connects to: | J5 pins 7-16      | J5 pins 7-16                              | <del>Either J5 or J6</del>                   | Either J5 or J6                        |

**LCD Backlight:** Generally if your LCD has a 16 pin connector then it will have a backlight. LCDs with a 14 pin connector may have 2 separate pins for the backlight, or will not have a backlight. The 200 ohm resistor sets the current to the LCD backlight at 7mA. If your LCD does not have a backlight you can omit this resistor. You can decrease this resistor to increase the brightness of your backlight, but do not use a resistor less than 100 ohms (10mA). If your backlight needs more current, then you can power you backlight directly from the 12v power supply, but the dropping resistor should be correspondingly larger. For example a 470 ohm resistor will supply approx 20mA of backlight current when connected to a 12-14v supply.

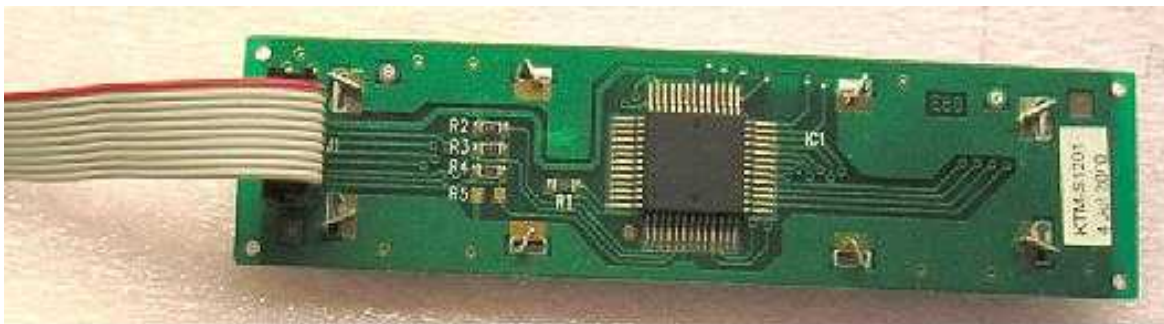
**Contrast Control:** The 10 pin serial LCD will work with either fixed or variable contrast control. Most 14/16 pin LCDs require adjustable contrast so you should use the column above for variable contrast control. A few will work fine with the contrast control pin grounded, for these use the column above for Fixed Contrast LCDs

**LCD Connection (Backlit):** These LCDs have a 16 pin LCD single row connector. This LCD is connected to the 16 pin single row connector J6 on the DDS PCB. Pins 7-10 are not used and can be skipped. See photo below:



You could also use a 16 pin single row connector, and then it's ok to include all 16 pins. Some displays of this type may have only 14 pins. In this case you would skip pins 15 and 16. Sometimes the backlight on some LCDs are brought out to separate pins. Only LED backlights will work with this board. You would hand wire the the LED backlight to pins 15 & 16 on the DDS PCB. Pin 16 is connected to the backlight LED's cathode, and pin 15 is connected to the LED anode.

**LCD Connection (KTM-S1201):** The standard serial LCD with a 10 pin connector (KTM-S1201) uses the pins 7-16 of J5. Solder a 10 pin header in there and another one in the back of the LCD. Mark one side of the cable with a red mark which indicates Pin 1. Pin 1 on the LCD module is closest to the 3 gold plated holes in a triangle pattern on the LCD module. Pin 1 of the LCD module goes to J5 pin 7.



**Photo of back of serial LCD, showing proper orientation of cable  
[Red Stripe indicates pin 1]**

**LCD Connection (Other):** When connecting LCDs with a 16 pin 2 row connector you would use J5. Which should go directly to the 16 pin connector on the LCD. You should be careful when connecting to a 2 row connector to make sure you have not swapped the even and odd pins. Carefully check the pin numbering before applying power, because reversing the odd and even pins will apply reverse power to the LCD and likely damage it. With a 14 pin LCD use the lower 14 pins of J5. Pins 15,16 are used for the backlight. Some LCDs have separate pins for the backlight.

# Operation

**Memories:** There are a total of 12 memories each memory holds a Frequency and an IF. In many cases all the IF's will be set the same. You can set any or all IF's to 0.00. Memories 0 though 9 are selected using the two pushbuttons (up/down) and are tunable. That is, if you turn the dial while at that memory the frequency will change. When you switch to the next memory, the last used frequency will be saved for the prior memory location.

The other two memories, are VFO A and B. These are different in that a separate control line (PB5) selects between the two. You can program a different IF in for VFO A and B, but I doubt you will want to.

With the standard serial LCD a single character on the left side of the display indicates the memory number (0 to 9) or A, b for the VFO's. With the character based 44780 LCD's the display will be slightly different.

**Dial speedup.** The default frequency increment is usually 1, 5, 10 or 25Hz per tick. As you turn the dial continuously, the tuning rate will start to increase. When acceleration starts a "F" will appear on the display. If you continue to turn the dial, the rate will continue to accelerate up to a maximum of 100KHz per tick. If you stop turning the dial for a few seconds the rate will return to the default rate and the "F" will disappear from the display. Entry into the "F" mode is based on the time the dial is continuously rotated, not the number of turns, so turning faster does not trigger that mode faster. Note that many parameters associated with tuning can be changed using the rs232 port, including default tune step and trigger points for acceleration. Refer to rs232 manual for details.

**Setting IF's** If's offset can be set in 3 different ways. You can use the serial port (refer to the serial port manual) You can set the current IF using the push switch, see the "**IF SET**" in the "**Function Switch Operation**" section below, that's the preferred method. There is also a special IF set mode similar to the method used in my older DDS. To enter this mode, remove power, hold either SW1 or SW2 and apply power. It will then come up in a mode, which will allow you to set the IF's. "IF" will be indicated on the LCD display. The DDS will output the IF frequency in this mode, which can be used to zero beat with your BFO if applicable. Then when complete, toggle through all memories, to make sure they are all ok, then remove power. This method may erase the operating frequency in memory, so it's best to set the IF's before anything else.

**Additive IF:** This VFO supports 3 different IF modes. The simplest is the additive, and example of this is the one used on the BITX20. The IF is 11MHz and the VFO tunes 3.0 to 3.35, resulting in an operating frequency of 14.0 to 14.35. For this type of operation enter the IF as a positive number, and enter the operating frequency as a positive number. It will compute the proper VFO frequency to generate. Note that this type of radio can never operate below the IF.

**Subtractive IF:** With subtractive IF schemes, there are two options for the VFO, high side, and low side VFO injection. For example, many 40m QRP radios have a 11MHz IF, with a VFO ranging from 4.0 to 3.7MHz. Tuning is backwards, so the higher the VFO the lower the operating frequency. To program you DDS VFO to work this way, enter the IF frequency as a negative number, i.e. -11.000.0 in this case, and also enter your operating

frequency as a negative number, to indicate low side injection. i.e -7.000.0, the DDS micro-controller will computer the proper VFO frequency to use, 4.000.0 in this case. Note that if you are using the serial port, you can turn on the debug mode, and it will display the IF, VFO, and operating frequency every time. Note that most radios will also work with high side injection without modification. For example you can change the operating frequency to +7.000.0 and you will be on the same frequency, but with high side VFO at 18MHz. Usually when you do this, the opposite sideband is selected.

**Dial Direction:** The dial direction may be reversed because of the use of negative IF's and/or high vs. low VFO injection. The dial direction can be reversed by changing the sign of parameter 9, (tick\_div) via the serial port. 0.02 or -0.02 are values to try for this parameters. If your encoder is remotely mounted, you can also interchange the A & B connections to reverse direction.

**Output:** The output signal is not amplified, and the level is approx. 250mV peak to peak which works well with SA612 or similar mixers. Output impedance is 200 ohms. It does not need to be matched, but the output filter is flatter if the output is matched. With vintage radios, or other applications, you may need a separate buffer amplifier.

**Calibration:** It is normally not necessary to calibrate your DDS-VFO. The 80MHz reference oscillator is specified at 100ppm accuracy, but they are normally much more accurate than this. Calibration is done in software, it is an extremely fine adjustment, much finer than the fundamental step size. The oscillation frequency of the 80Mhz timebase will not change, but the mathematics will be adjusted. 64 bit math is used in computing operating frequency to be certain, that no error would be introduced by rounding. A change of +0.20 in this parameter is approx. a 10 Hz change of operating frequency at 20MHz. Keep in mind that it is a multiplicative correction factor, so a 10Hz change at 20MHz, will result in a 5Hz change at 10MHz. The calibration factor can be set via the serial port, or using one of the push switch modes, see below.

**FSK & PSK:** This DDS can send FSK and PSK directly, without first generating Audio FSK & PSK. FSK (RTTY) is sent by using the RIT function. Connect your RTTY signal (0-5v) to J3 pin 7, and leave J3 pin 8 open. Set the RIT value (see below) to your RTTY shift (typ 170Hz). If your RTTY signal is coming from a computer serial port you will need to convert it to a 0-5v signal (R10 is a pullup for this signal). You can invert the RTTY signal, by changing the negating the RIT offset i.e -170Hz.

To send PSK directly, you need to connect to the PH test point on the PCB (adjacent to R10). There is a fine trace on the back of the PCB grounding this signal, so you will need to cut that. Feed a 0-5v PSK signal into this point. The amount of phase shift is set by EEPROM parameter #10, the default is 180 degrees. Note that most computer sound card PSK programs generate Audio PSK only, not base-band digital PSK, and thus cannot properly drive this. (RTTY programs typically generate both, AFSK and base-band Digital FSK) This should only be used by advanced users. Very advanced users might notice that it is possible to set a phase shift of 90 degrees and generate I & Q using two DDS's locked together.

**Function Switch operation:** The function switch can be either a push switch on the encoder, or a separate push button switch. This switch brings up special parameter setting modes for RIT, Tuning Step, Calibration, IF, and EEPROM format. Press and hold the switch, then press one of the up/down buttons you will toggle through the 5 different parameters that can be set. The first is RIT mode, is indicated on the left 2 digits as dF (for delta F) Tuning speed is shown as "SP", Calibration is shown as "CA", IF set is shown as "IF", EEPROM Format is "EF". On the other LCD types they are a single character R,S,C,I,E. Simply release the switch when you get to the one you want. Each of these settings is described below

**RIT Adjust (dF):** Use the tuning knob to adjust the Rit offset. If the Rit control line is low, then the output frequency of the DDS will move accordingly. When you are finished, simply stop tuning for a while and it will return to normal.

**Tuning Step (SP):** Use the dial to set the tuning step. As above simply stop turning the knob when you get to the value you want, and it will return to normal after a few seconds. 25 or 50Hz works well for SSB, 5 or 10Hz works well for CW. Do not set to anything greater than 10,000Hz.

**Calibration (CA):** This adjustment is very fine. You will be making an adjustment to the main calibration factor, and only the delta will be displayed. First, in normal operation, set the DDS output to a reference frequency, such as 10.000.000MHz. Use the push switch to get into the calibration mode, then use the dial to zero beat the DDS signal to your reference, be it WWV or some other source. The adjustment is extremely fine. Once you are satisfied, stop tuning and after a few seconds the value will be saved, and the master calibration factor will be adjusted. When setting it via the knob only the change from the current setting is displayed, so it always starts out at 0.000 and changes are cumulative.

**IF SET (IF):** The current IF is set by turning the dial. If you want to change the IF for a different memory, you need to return to the normal operating mode, then change the memory number, and then change the IF again.

**EEPROM format (EF):** This function causes the EEPROM to be loaded with factory default values. You will lose any IF's or frequencies you have set in, and any parameters you may have changed. Turn the encoder until you get to a reading of 73 on the LCD. Stop turning and wait, it will take a few seconds to initialize the EEPROM, and then the LCD should display a flashing message. At this point, remove power and re-apply power to reboot. The DDS will now start up with fresh factory default parameters. All the IF's are set to 0.0, and the memories are set to a MHz value equal to their memory number (ie memory 5 is set to 5.000.000) If you set the LCD to anything other than 73, nothing will happen and the reformat will be canceled. (If you are using a 3rd party LCD, rather than "EF" you will just see "E", and the dial will change the Rit Digits, which you will set to 0.073)

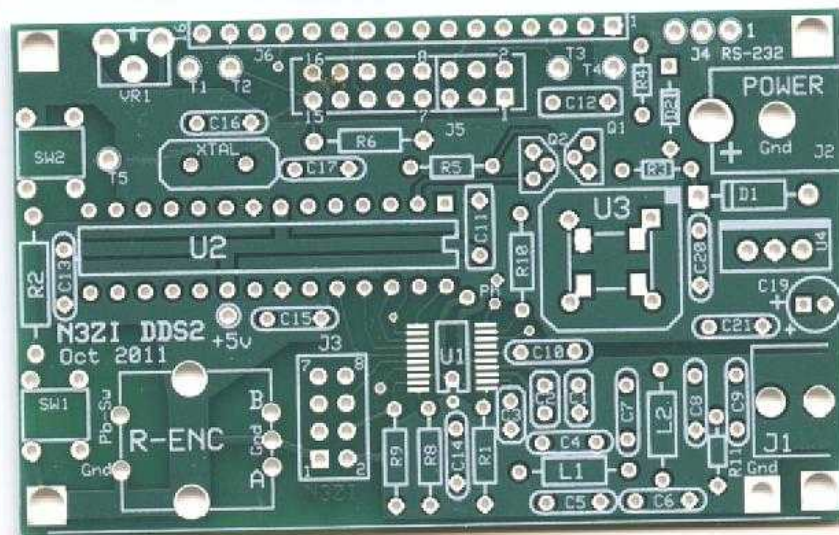
## Other Encoder Connections

The standard kit includes a mechanical encoder that mounts to the PCB, with an integrated push switch (5 pins). If you chose the optical encoder, it mounts off the board, and the pushbutton switch is separate as shown in the photo below.



The Optical Encoder has 4 pins on the back, labeled: + A B -

- Connect Encoder pin "+" to +5v on the PCB (Red wire in above photo)
- Connect Encoder pins A, B to the holes marked A,B on the PCB photo below.(Green and yellow wires in the above photo) Note: Reversing these will reverse tuning dial direction
- Connect the encoder pin labeled "-" to ground.(Black wire in the above photo)
- Connect the pushbutton switch pins to the holes makes PB-SW and GND in the photo below (Black white twisted pair in above photo)



You will need to connect the serial port and change some parameters in the micro. (No programming is required) The "DDS 2 RS-232 interface Spec" is located on my web site here: <http://www.pongrance.com/manuals.html>

- Change parameter #4 to 0.001 (Step size)
- Change parameter #5 to 0.003 (3 for 128pulse, 1 for 256)
- Change parameter #6 to 0.200 (Loop delay)
- Change parameter #7 to 1.100 (Acceleration)
- Change parameter #8 to 0.000 (Debounce)
- Change parameter #9 to 0.001 (Tick Divider)

If you ordered one of the kits that includes the optical encoder, then these changes may have already been made to your micro.

-----

Some kits may include a PCB mounted encoder with only 3 pins. This type does not have an integral push switch. With this encoder, you will have to add an external pushbutton switch, wired as shown above. No parameter changes are needed with this encoder.

## Aux Connector

There is a 8 pin connector (J3) in the lower center of the board. Carefully note the pin numbering, in may or may not match up with other connectors. Pin number are on the front silk screen and back copper.

| Pin # | Name    | Type           | Function  |
|-------|---------|----------------|---|
| 1     | Gnd (D) | Ground         | Digital Ground  |
| 2     | Gnd(A)  | Ground         | Analog Ground   |
| 3     | PB5     | Digital Input  | A/B VFO select, grounded selects VFO A, open or high selects VFO B<br>You can connect this to a switch, or relay, but any voltage over 5v, or negative, will likely damage the microprocessor. Use an opto isolator to connect to anything that may have a high voltage. Only 200uA will flow when PB5 is grounded. |
| 4     | Aux-A   | Analog Output  | Secondary DDS RF output, un-filtered.   |
| 5     | PC0     | Digital Output | Band output,<br>high if operating frequency is below limit in EEPROM  |
| 6     | D - out | Digital Output | Not used  |
| 7     | RITa    | Digital Input  | LOW causes LCD to display Freq w/ Rit<br>(Normally tie pin 7 and 8 together)  |
| 8     | RITb    | Digital Input  | LOW Causes RF output to shift in frequency by Rit offset<br>(Normally tie pin 7 and 8 together)   |

Rit wiring: Plns 7 and 8 control the Rit. Pin8 causes to DDS to actually shift to the Rit frequency. Pin 7 causes the LCD to display that frequency. Normally you would tie these together. But you could keep them separate and it would give you the ability to look at the Rit frequency is without actually changing the frequency. When you are adjusting the Rit by using the tuning knob (see above) the output of the DDS will only reflect this frequency if the Rit is turned on, i.e Line 7 above is low.

Rit is an offset to the main frequency. So for example if the Rit is set to 1.000KHz, and the main frequency is set at 7050.000, when you lower the rit control line (Pin 8) the frequency will shift to 7051.000 and if you also low control line #7, the LCD will display that new frequency. If you then change the main frequency, to, for example, 10,110.00, then lower the rit control line the output frequency will move up to 10,111.00. You do not have to set the rit offset again after you change the main frequency. The Rit can be set to pretty much anything, positive or negative.

The rit frequency shift is fast an phase continuous, there are no glitches, and it could be used for FSK (Rtty)

There are two other test points that might be of interest. 1) One is Labeled "Ph" located between U1, U2 and U3 On the back there is a thin trace connecting it to ground. This controls a phase shift for the DDS chip. If you cut this grounding trace then a 5v logic signal will select between normal and phase shifted output. The default phase shift is 180 degrees, which would allow you to transmit BPSK31 directly. This parameter is #10, and can be set via the serial port to other interesting values, e.g. 90 degrees. 2) Another is Labeled "+5v" located between the Renc and U2 which outputs a 10Gb/s stream equal to the square root of the time of day in Chinese. (I just want to see if anyone actually reads the manual.)

## Changing Text on 16x2 Alpha-Numeric Displays

If you use a 16x2 or larger Alpha-Numeric display it is possible to change the text in certain areas, to display your callsign or something else.

To do this you will need to connect the RS-232 port. The "DDS 2 RS-232 interface Spec" is located on my web site here: <http://www.pongrance.com/manuals.html>



There are 4 Ascii characters on the end of the first line, there are saved in EEPROM location 20(2.000)

There are 8 Ascii characters on the end of the second line, the first 4 are in EEPROM location 21, the last 4 are in location 22. I do recommend that the first character be a space.

In the above example, **N3ZI** is in location 20, **space space WA** is in location 21, and **3JBN** is in location 22

The editor for EEPROM is based on 32 bit BCD coding, so you have to manually pack your 4 Ascii characters into a 32 bit word, then enter it in BCD. This is a tad confusing. For example "N3ZI" ends up being 1,230,648.142 I have a excel spreadsheet that will do this for you on my website manuals page: <http://www.pongrance.com/manuals.html> look for "DDS Text converter tool"

You cannot add or change text to the standard serial display (KTM-S1201) or and 8x2 or 16x1 Alpha-Numeric displays.

